

Budget Services:

North Harbour Budget Services
 North Shore Budget Services
 Presbyterian Support Budget Services
 Money Mates (Salvation Army, Glenfield)

Business:

Auckland Dance Company
 Auckland Zoo
 Bloom Living (James Klein)
 Boric Food market
 Casual Foodie
 Flowers on Onewa
 High Life
 Little Givers NZ
 Motat
 Northcote Tavern
 Silverdale Adventure Park
 The Warehouse (Birkenhead)
 Warehouse Corporate Office
 Whoa Studios
 Z Petrol Station (Onewa Road) - "Good in the Hood"

Government:

Ministry for Children Oranga Tamariki
 Housing New Zealand
 Ministry of Social Development
 New Zealand Police
 Work & Income

Schools:

Carmel College
 Northcote College
 Northcote Primary
 Rosmini College
 St Cuthbert's College
 St John's Primary Mairangi Bay
 St Mary's Primary School
 St Mary's College
 Westlake Girls

Collaborations:

20/20 Community Trust (Spark)
 Housing Connections (Auckland Emergency Housing Network)
 Community Fruit Harvesting
 English Language Partners
 Good Bitches Baking
 Inner City Women's Group
 Kaipatiki Community Facilities
 Kaipatiki Youth Development Trust
 Kiwi Harvest
 Little & Friday
 Littlemore
 North Shore Women's Centre
 North Shore Rotary Clubs
 Park Lane Knitting Group
 Plunket
 Rocket Kitchen
 Roundabout
 Salvation Army, Glenfield
 Shine *
 Spero Shoes
 The Fono
 Woodside Cafe



Funding:

Auckland Council
 Barney & Patsy McCahill Charitable Trust
 CR Stead Trust
 Catholic Caring Foundation
 Community Organisations Grants
 Constellation Communities Trust Ltd
 Dream Trust
 Foundation North
 Holzer Family Charitable Trust
 Hugo Charitable Trust
 Lion Foundation
 Ministry of Education
 Ministry of Social Development
 NZ Lotteries Grants Board
 NZ Post
 Perpetual Guardian
 Sky City Auckland Community Trust
 Sir John Logan Campbell Residuary Estate
 Ted & Mollie Carr Endowment Trust
 The Tindall Foundation
 TM Hosking
 The Warehouse Support Office

Parish and interdenominational support:

Catholic Diocese of Auckland
 Maria Assumpta Parish (Beachhaven)
 NZ Dominican Sisters Trust Board
 Secular Order of Franciscans
 St Joseph's Parish (Takapuna)
 St Mary's Parish (Northcote)
 St Vincent de Paul Societies
 Vinnies (Ellice Road)

To each family and individual who has provided financial and volunteer support, as well as any donations of goods to De Paul House

Thank you for your generosity in 2016-17.



Established 1986

Annual Report

2016 - 2017

A review of 2017:

- ◇ The last year has seen a substantial expansion in services with our emergency housing doubling its capacity and an increase in staffing levels from 13 to 19 (a mix of part and full time).
- ◇ We have sourced additional suitable accommodation and now have capacity to house 24 families.
- ◇ On a daily basis we are housing between 80 to 100 individuals. 60 to 70 per cent of those living with us are children.
- ◇ Ongoing community support has been provided to 61 families.
- ◇ De Paul House's Learning Centre has offered practical life skills to our adult learners. Computing, budget skills, cooking, sewing and literacy classes offer a mix of fun and skills based courses.
- ◇ De Paul House's Childcare Centre has seen its busiest year ever. Children thrive and adults learn social, parenting and educational skills.

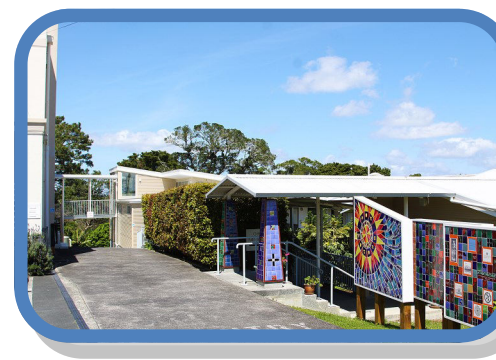


Financial

Expansion brings with it a challenge in respect to financial sustainability. We have responded by aiming to achieve a reserve to meet a target of 6 months operational expenses. The Board acknowledges that we are making good progress in this important financial goal. The support of our many generous donors enables this and we remain truly appreciative.

Future Challenges

Looking beyond 2017 with a solid base to continue to build on, we remain conscious of the relevance of the Universal Declaration of Human Rights signed in 1948 and the part we play in enabling vulnerable families to achieve a future sustained by *security, independence and dignity* as encapsulated by our Mission Statement.



"Everyone has the right to a standard of living adequate for the health and wellbeing of himself and of his family, including food, clothing, housing and medical care and necessary social services, and the right to security in the event of unemployment, sickness, disability, widowhood, old age or other lack of livelihood in circumstances beyond his control." Universal Declaration of Human Rights (United Nations General Assembly 1948)

Snapshot of 2017

January

Learning Centre and the Early Childhood Centre restart.



February

Orientation for senior secondary students who will be mentors and tutors in the Homework club in 2017 begins. 15 school aged children will have access to computers, the internet and support.

March

A great grandmother and grandfather who have taken on the care of their great grandson are delighted to be offered a Housing NZ property after a 6 week stay at De Paul House.

May

The Auckland Emergency Housing network meets. 14 emergency housing providers meet with the Ministry of Social Development and Housing NZ

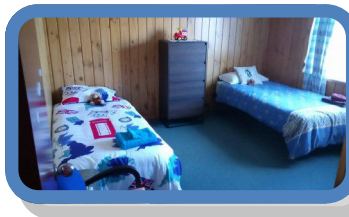
April

The new passenger van funded by Rotary North Shore Clubs arrives to much excitement. This will be used to pick up families living in the community who continue to attend the learning centre, early childhood centre and social work services. (61 families have benefited from this service in 2017)



July

Volunteers and staff pitch in to ensure that the new properties are comfortable and ready to house new families. Beds are made up and the first families move in.

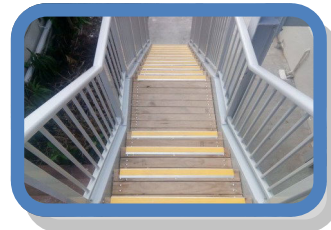


June

The Catholic Diocese of Auckland & Maria Assumpta Parish, Beach Haven offer additional properties which enable us to provide emergency housing to 11 additional families.

August

The new external stairs to two units are completed. Residential emergency accommodation requires continual maintenance and building work.



September

A review of De Paul House's social sector accreditation (covering services, staffing, health and safety, management and governance) begins. De Paul House is advised that this is completed successfully in October.

November

404 enquiries for emergency accommodation have been received in the last year, averaging 2 per working day.



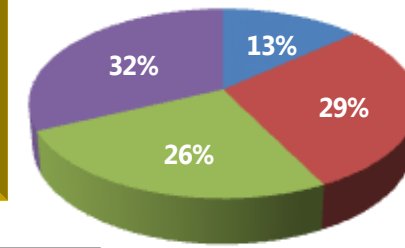
December

Christmas preparation starts. Approximately 60 hampers and gifts for residential and outreach children will be prepared by volunteers and staff. De Paul House has been home to 65 families this year.

Planning for residential programmes in 2018 commences.

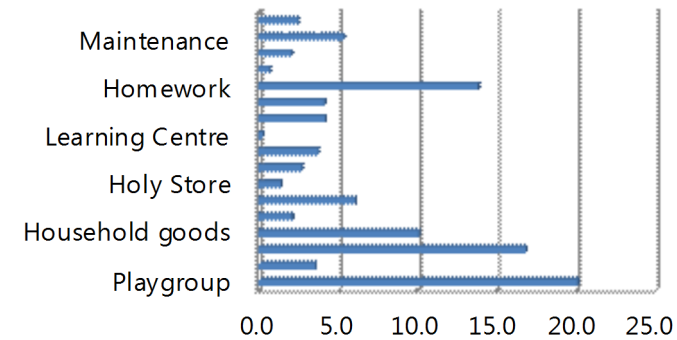
Funding Breakdown

**2967 people have been rehoused by De Paul House since 1986:
1718 children and 1249 adults.**



- Sundry Income
- Government Grants
- Fundraising & Donations
- Philanthropic Trusts

Volunteer % Jan 2016 to Dec 2016



Cost Centre Summary 2016

	2016	2015
Total Annual income	954782.73	793,990.28
Admin Expenses	66221.42	64,826.62
Outreach Expenses	145753.01	147,454.29
Playgroup Expenses	98983.54	96,981.61
In-house Family Support Expenses	283651.34	276,424.20
Furniture & Clothing Expenses	43454.70	41,655.58
Donor & Fundraising Expenses	69805.12	67,634.16
Learning & Homework Centre Expenses	73568.91	73,484.64
Depreciation	35495.00	28,758.09
Total Annual Expenses	816,933.04	797,219.19
Net Operating Deficit / Surplus	137,849.69	(3,228.91)

Our current board members:

Brendan Fitzgerald (Chairman)
Judge Ian McHardy
Deirdre Berry
Lui Poe
Karen O'Connor

Gerard Burns
Alan Blackie
Kathleen Petrie
David Redmore
Elizabeth Bisquera (Minute Secretary)